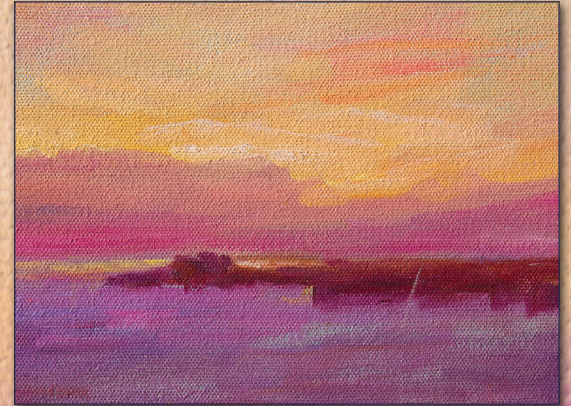


# The Maurice River School

## The BARN STUDIO of ART

A New Jersey Non-Profit Corporation



*Paint the next great American landscape with the Maurice River School of Painters.*

**INTENSIVE**

**Plein Air Painting Workshop  
July 12-18, 2015  
MauriceRiverSchool.org**

## The BARN STUDIO of ART

814 Whitaker Avenue, Millville, New Jersey 08332

856-825-5028 • [BarnStudio.org](http://BarnStudio.org)

Funding has been made possible in part by the New Jersey State Council on the Arts / Department of State, the National Endowment for the Arts, the Cumberland County Board of Chosen Freeholders and the Cumberland County Cultural & Heritage Commission.



Pat Witt founded The Maurice River School in 1965. The school's philosophy is to promote education about the Maurice River as well as use various sites along the river for landscape classes. She states "The Maurice River School of Painters is not of Bricks and Mortar, but in an Ethereal Sense, likened to the Hudson River School, Brandywine River, Susquehanna River, and Delaware River Schools. Where Artists and Painters gather to enjoy the regional sights."

### The Workshop

**8 am Daily (Monday through Friday)**

Participants gather on location or by the pond at The Barn Studio of Art with their painting materials and French easels. Each day a demonstration by one of the instructors will be given either at The Barn Studio pond or on location along the Maurice River. This will be followed by individual working time on location. Daily locations will be determined by weather and working conditions.

We will be working "en plein air" most of the time. Be prepared!

The Barn Studio of Art: The Maurice River Valley and the grounds of the Barn Studio of Art offer beautiful environments of flower gardens, ponds, wetlands, river views, and large sky vistas to truly inspire the painter. This workshop offers daily demonstrations by professional artists, tranquil hours of painting time, and lively conversations with fellow artists. The Barn studio of Art provides the perfect setting for launching daily painting sessions. "We look forward to a wonderful week of painting, fun and inspiration!"

For more information regarding the Maurice River and its tributaries, visit [www.nps.gov/maur/](http://www.nps.gov/maur/)

**Complete Workshop price includes refreshments Sunday afternoon and the Maurice River Boat Cruise on Wednesday evening.**

**DEPOSIT:** A deposit of \$240 is required at time of registration to secure spot in week-long workshop. Balance can be paid in 2 installments of \$155 each: First, by **May 27, 2015** and second, by **June 12, 2015.**

The Barn Studio of Art is dedicated to cultivating the love of arts in people of all ages and abilities. The Barn Studio of Art will nurture the study of art and nature throughout the community in a non-competitive, creative, developmentally appropriate and positive atmosphere.

The Barn Studio of Art does not discriminate on the basis of race, religion, gender, sexual orientation, national or ethnic origin in the administration of its admission policies, financial aid, or employment.

## Registration Form

**Bring or Mail to:** The Barn Studio or Art, 814 Whitaker Avenue, Millville, NJ 08332 • 856-825-5028  
**Please make checks payable to:** The Barn Studio of Art

**\$540 (\$555 if paid online.) Class Fee Does Not Include Supplies, Food or Lodging.  
 Deposit of \$240 required (Class fees not refundable or transferable).**

Name \_\_\_\_\_  
 eMail \_\_\_\_\_  
 Address \_\_\_\_\_  
 Home Phone \_\_\_\_\_ Call Phone \_\_\_\_\_  
 Dates Attending:  SUN  MON  TUE  WED  THU  FRI  SAT  FULL WEEK Fee: \_\_\_\_\_  
 Deposit Amount Paid: \_\_\_\_\_ Date: \_\_\_\_\_ Balance: \_\_\_\_\_  
 Installment 1 Amount Paid: \_\_\_\_\_ Date: \_\_\_\_\_ Installment 2 Amount Paid: \_\_\_\_\_ Date: \_\_\_\_\_

**Questions? Please contact Nancy at 614-565-7549 or email her at [nancy.mulick@gmail.com](mailto:nancy.mulick@gmail.com)**  
*Established 1962, Pat Witt, founder & Executive Director Board of Directors: Nancy Witt Mulick, Carole Witt Mankin, Mark Giberson, Kandice Fields*

## Additional Information

Class fee is \$540.00 per person (\$555 if paid through our website). Because of the unique nature and limited class size, it is expected to fill quickly. Be sure to apply as soon as possible to hold your spot. Class fees are not refundable or transferable.

A Maurice River School information packet will be sent out upon registration to include details regarding lodging/restaurants in the area, supply list, etc.

Complete Workshop price includes refreshments Sunday afternoon and the Boating Party Cruise on the Maurice River on Wednesday evening.

A deposit of \$240 is required at time of registration to secure spot in week-long workshop. Balance can be paid in 2 installments of \$155 each (30 days, June 12 and 15 days prior, June 27, 2015).

Our single day registrations are not currently available, but will be at a later date to be advised. Please sign up for our e-mail list (and Check "Maurice River School" as your area of interest, as we will be e-mailing this list with updates regarding the Maurice River School).

Payments are made through the secure PayPal service for your protection and peace-of-mind.

Nancy Witt Mulick • Stan Sperlak • Larry Francis • Jill A. Rupinski  
 Pat Witt • Patrick Connors • Bill Ternay • Matthew Daniels

## Class Schedule

Sunday July 12	<b>4 pm</b> – Meet and Greet at the Barn Studio Pond
Monday July 13	<b>8 am</b> – Meet on Maurice River with Stan Sperlak. Address will be given. (Pastel Demo) Noon: Lunch Break and cool off
Tuesday July 14	<b>8 am</b> – Leesburg Shipyard with Larry Francis (Gouache Demo) Lee Shipyard, 14 River Rd, Leesburg, NJ 08327 Noon: Lunch Break and cool off
Wed July 15	<b>8 am</b> – Burcham Farm with Jill Rupinski (Water Media & Pastel) Noon: Lunch Break and cool off <b>6:15 pm</b> – Meet at Ware Avenue dock for evening cruise on the Maurice River
Thurs July 16	<b>8 am</b> – meet on Front Street in Mauricetown. (Oil Demo with Patrick Connors) Noon: Lunch Break and cool off
Fri July 17	<b>8 am</b> – Vanaman farm with Bill Ternay (Water Color Demo) Noon: Lunch Break and cool off Afternoon – Hang artwork at RRCA Witt Gallery <b>6-9 pm</b> Third Friday Opening at RRCA
Sat July 18	<b>9:30-11:30 am</b> – Final Critique, at RRCA Witt Gallery

**MauriceRiverSchool.org**

## The Maurice River School Instructors

**Nancy Witt Mulick**, Workshop Director/Barn Studio of Art Director of Special programs, divides her time between Columbus, Ohio and New Jersey. She teaches everything from drawing to 3-D design. She has taught hand paper making at Rhode Island School of Design and is a practicing artist working in handmade paper and mixed media. Nancy has been returning to The Barn every summer for the past 39 years to teach papermaking, drawing and painting.

**Stan Sperlak** studied painting and drawing at the Pennsylvania Academy of the Fine Arts in Philadelphia, and with Pat Witt at the Barn Studio of Art. He maintains a studio where a marsh, farm and forest meet on the Crow Creek in Goshen, NJ. Stan is a signature member of the Pastel Society of America, the Maryland Pastel Society, The Mid Atlantic Plein Air Painters and the Cape May County Art League.

**Larry Francis** is a graduate of the Pennsylvania Academy of the Fine Arts and currently teaches painting at PAFA. His work is represented by the Gross McCleaf Gallery of Philadelphia. He is the recipient of numerous prizes for painting and his work is in numerous collections including the Noyes museum Collection. His primary painting medium is gouache.

**Jill A. Rupinski** is an Assistant Professor at the Academy, teaching drawing, painting and color. She has a Certificate from the Academy and a BFA from the Philadelphia College of Art. Pennsylvania Academy of the Fine Arts 1977. B.F.A. Philadelphia College of Art 1981. Spanish Exchange Program for one month travel in Spain from the Creative Artists Network Philadelphia 1989. Landscapes Oils and Pastels Philadelphia Art Alliance 1996. Lecture: "Color-Earth and Prismatic" Reading Public Museum 1998. Collections: Colgate University Hamilton NY; Villanova University.

**Pat Witt** is the founding painter of the Maurice River School, her vibrant paintings of the marshlands are legendary in the area. Her work captures the light and color phenomena of the South Jersey atmosphere. She works in a prismatic palette made up of the primary colors and has exhibited throughout the United States and in Paris. She has been the subject of several documentary films on NJNetwork and PBS/NJ.

**Bill Ternay** has had a long and varied career as an illustrator, painter, and teacher in the Greater Delaware Valley. He has taught at University of the Arts, The Mainline Center for the Arts, and was chairman of the Illustration Department at Moore College of Art and Design. Bill is past president of the Philadelphia Watercolor Society and has been a guest instructor at The Barn Studio of Art for many years.

**Patrick Connors** is a graduate of the Pennsylvania Academy of the Fine Arts and the University of Pennsylvania. He was awarded an Oxford Fellowship in Painting and Anatomy. He currently teaches at the PAFA, New York Academy of Art graduate school and Grand Central Academy of Art. He has lectured at Yale University and is the recipient of numerous awards for painting. He has successfully completed many private and public commissions.

**Matthew Daniels**, Assistant Director of the Maurice River School Workshop. Matthew Daniels teaches art at the Millville Senior High School. Matt holds a BFA from Tyler School of Art, Temple University. He spent time working with the renowned Philadelphia Mural Arts Project. Matthew took classes at the Barn as a child and was inspired by Pat and her innate connection with her students through fine arts.